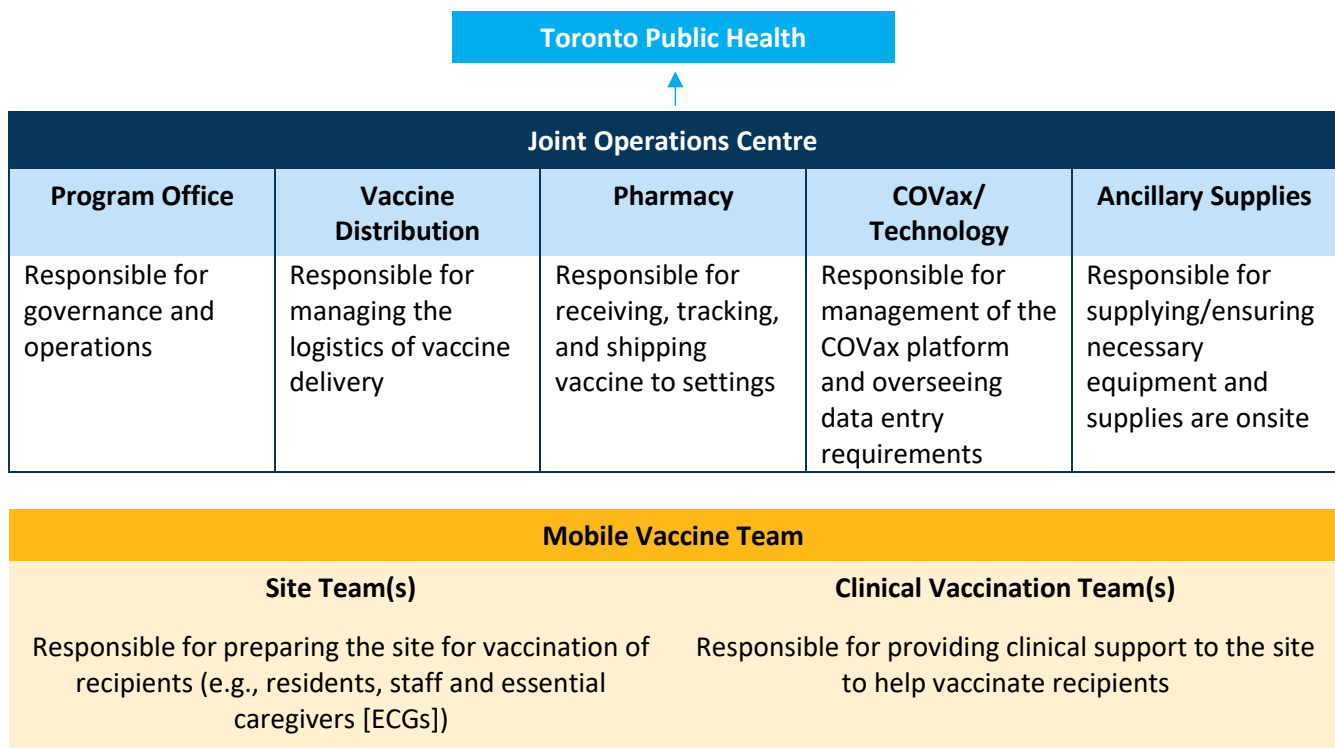


Mobile Team Vaccine – Overview

Mobile Team Vaccine was established in response to Government and Ministry of Health direction to rapidly scale up the immunization of Long-Term Care Home (LTCH) and high-risk Retirement Homes (RHs) vaccine recipients (residents, staff, and essential caregivers [ECGs]). This coalition of health systems is organized around a Joint Operations Centre (JOC) led by the University Health Network, and works in partnership taking direction from Toronto Public Health (TPH). This partnership is focused on mobile vaccination efforts in the Greater Toronto Area currently using the Moderna Vaccine and will scale up efforts to support other settings as prioritized by TPH.



The University Health Network (UHN) supports a coalition of partners via the **Joint Operations Centre**. Partner health systems are responsible for the Joint Operations Centre tasks and designate leads support logistics, site readiness and clinical preparation. This group also works closely with the **Mobile Vaccine Teams**, comprised of the Site team and a Clinical Vaccination team, to ensure sites are supported while vaccinating recipients. Depending on the needs of the site, each setting will need to determine the constituency and number of site leads and/or clinical teams. Central clinical teams are also available to support settings where needed.



Aligning Efforts to Support the Highest Priority Populations

The program phases were mandated by the Ministry of Health. The Mobile Vaccine Team was brought in to do the first and second vaccine doses to recipients at LTCH and RH, ALC and areas of highest need as directed by TPH. The team is waiting on further direction from TPH as to when we can move forward once there is availability of additional vaccines.

The current prioritization list is shown on the following page.

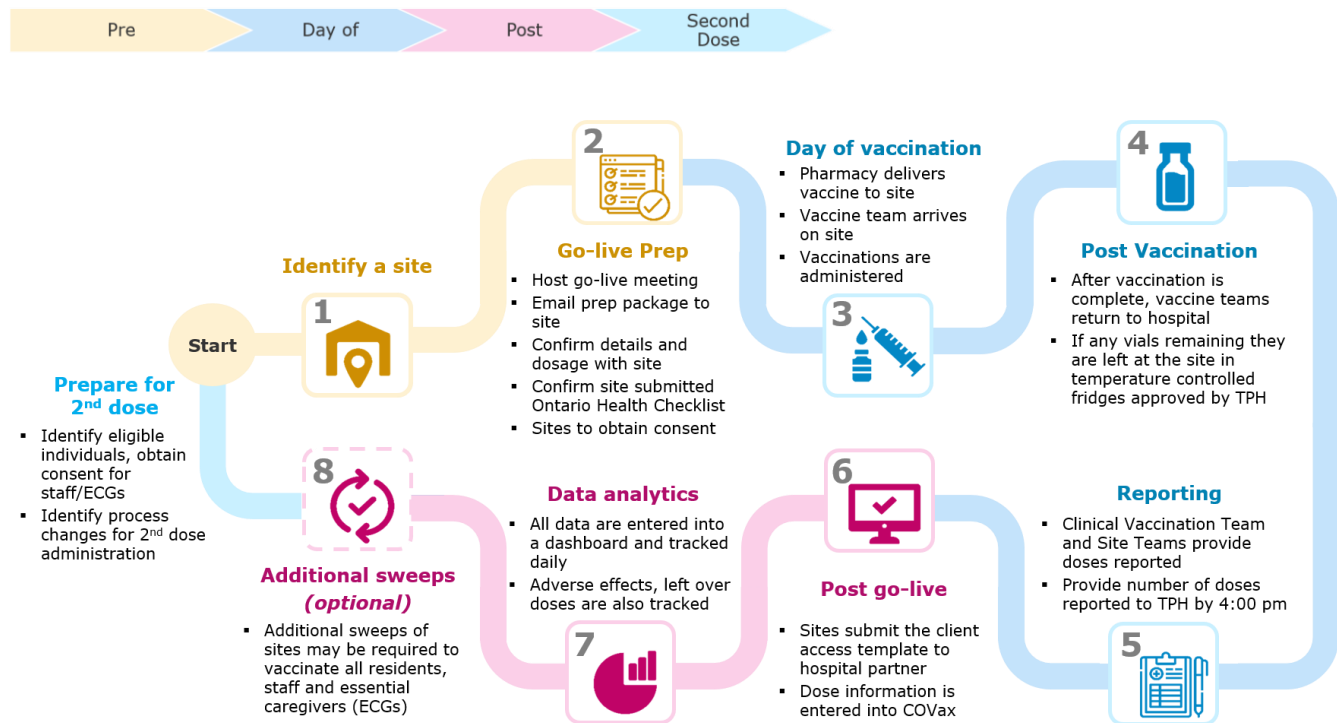
Mobile Team Vaccine – Overview

Toronto Public Health High Level Prioritization and Approach

Prioritization	Phase 1 – priority healthcare workers	Phase 2 – vulnerable populations	Phase 3 – widely available
Approach	Stationary Vaccine Clinics	Mobile Vaccination Clinics	
Supports		Joint Operations Support	

Vaccine and other supplies and equipment, transportation and logistics, aligned with direction set by TPH

Mobilizing Team Vaccine (~72-hour process)



Clinical Vaccination Team Models

Clinical Team	Site Team
Setting with >100 Vaccine Recipients to be vaccinated	
<ul style="list-style-type: none"> 1 Clinical Lead 2 MDs 4 other team members (e.g. MD, RN, RPN, pharmacy RHPs) 	<ul style="list-style-type: none"> 1-4 staff members (if available medical directors, physicians, nursing, PSWs, peer support) for observation period, eligibility assessments and vaccination hesitancy 1-2 employed members of the site <i>per cart/ vaccination station</i> to help with logistics and flow
Setting with <100 Vaccine Recipients to be vaccinated	
<ul style="list-style-type: none"> 1 Clinical Lead 1 MD 1-4 other team members (MD, RN, RPN, pharmacy RHPs) 	<ul style="list-style-type: none"> 1-2 staff members (if available, medical directors, physicians, nursing, PSWs, peer support) for observation period, eligibility assessments and vaccination hesitancy 1-2 employed members of the site <i>per cart/ vaccination station</i> to help with logistics and flow